

FACT SHEET CORPORATE WEAR

MANAGING CORPORATE WEAR WITH PEBBLESTONE FASHION

Whether your customers are security companies, hospitals, fire brigades or public transport companies... they buy uniforms from you. Other companies choose to have their people wear the same suits or working clothes. All these garments can be either confection or made-to-measure. The processing of these kind of orders can be quite a job in a standard ordering system. The corporate wear module in Pebblestone Fashion® is especially designed to this job for you.

The corporate wear base module enables you to register a specific garment set per customer. You can assign this garment set to one or more job responsibility groups.

Finally, you can assign the garment set linked to a responsibility group to a contact (wearer) within this group, with the possibility to assign a default size to this wearer.

Only those items linked to the wearer will be suggested at order entry. After the sales order is finalized, an authorization is required before the sales order will be further processed. Delivering the order, through WMS or through the delivery worksheet, can be done combined to the customer, or can be done directly to the wearer. Furthermore, the base module includes a set of reports, including a customer/garment set overview and an overview of outstanding sales per customer/wearer.

CORPORATE WEAR ENTITLEMENTS

In most cases, each employee has a yearly budget, in values or points, to spend per year. After setting up this structure, order entry is easy. The correct items will automatically be suggested and the system will check whether the employee still has room in his or her budget.

VALUE ADDED SERVICES

All embellishments like embroideries, prints and special measures, for example shortening pants, can easily be administrated in value added services. The data are registered and kept for repeated use in future. Sometimes it is necessary to track individual garments on the basis of serial numbers. When such a garment is returned, you will immediately know what route it has gone until that moment, what adjustments have been made and which employee has used it.

In most cases this module is used in combination with the module corporate wear, but is also available for use in a set up without corporate wear. For example for companies in promotional wear or brand owners who regularly use prints and embroideries in their garments.

WEB ORDER ENTRY POSSIBILITIES

To make things even easier, order entry by the individual employees through a web interface is possible. If required, an authorization structure can be set up, where orders are only processed after an OK has been given by a manager or other authorized person.

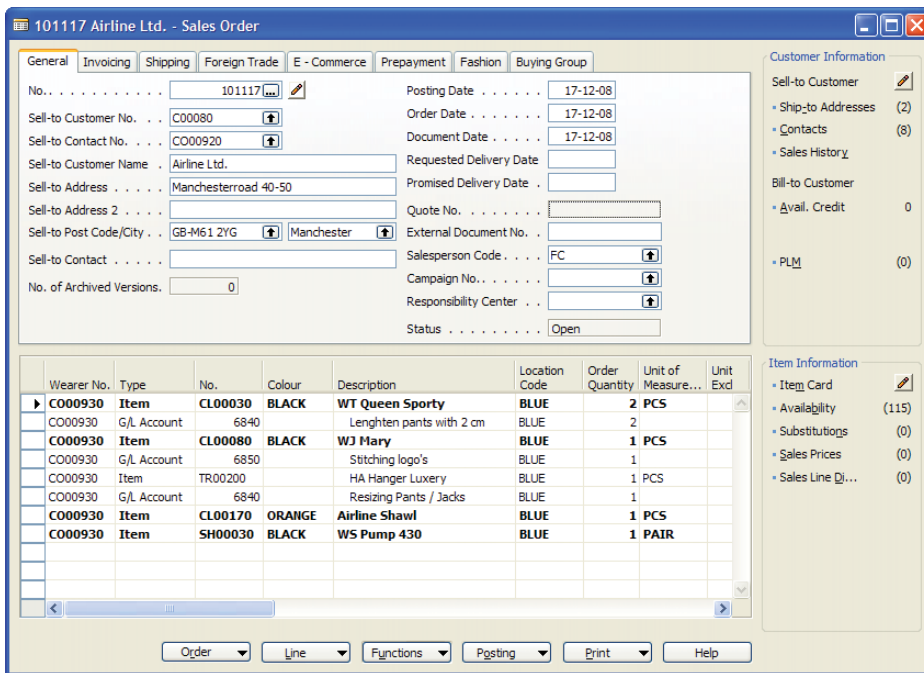
The corporate wear solution will build further on and fully integrate with the existing modules of Pebblestone



Fashion. The extensive possibilities to create models and items in unlimited variations, as well as all fashion specific additional functionalities, are fully available, also for corporate wear companies.



FACT SHEET CORPORATE WEAR



Managing Corporate Wear with Pebblestone Fashion:

- From uniform to made-to-measure
- Uniform wardrobe management
- Standard ordering of work wear
- Control on individual work wear entitlements
- Personalized garment sheets
- Value Added Services for personalized wardrobes
- Web order entry facilitated

Sales order for a specific wearer with garments and value added services.

No.	Name	2005	2006	2007	2008	2009	2010
CO00930	Caroline Hensen	160	160	400	240	400	
CO00960	Eric Forrester	160	160	400	400	400	
CO00980	Iris Blooming	160	160	400	400	400	
CO00940	Jim Johnson	160	160	400	370	400	
CO00950	Katie Smith	135	160	400	400	400	
CO00970	Marc Hammond	160	160	400	400	400	
CO01000	Marian Dubois					400	
CO00890	Catherine Morlay	623	100				
CO00880	Jerry Springer	655	80				
CO00870	Marnie Jerome	657	80				
CO00900	Roberta Kramer	700	100				
CO00860	Will Brubaker	680	80				

Corporate Wear Entitlements: Overview of the available entitlements per wearer.

“PEBBLESTONE FASHION IS POWERED BY MICROSOFT”

AUSTIN, TX
 3925 West Braker Lane
 Suite 3.8106
 Austin, Tx 78759-5316
 USA
 Phone: (512)215-4176

MEXICO, DF
 Insurgentes Sur 586
 Despacho 402
 Col. del Valle
 Delegacion Benito Juarez
 Z.C 03100
 Mexico
 Phone: + 52 (55) 5340-4540
 Fax: + 52 (55) 5543-1977

MONTERREY, NL
 Ave. Roble 525 Tercer Piso
 Col. Valle del Campestre
 San Pedro Garza García, N.L.
 Mexico
 Z.C 66265
 Phone: + 52 (81) 8153-4400
 Fax: + 52 (81) 8153-4401

CHILE
 Providencia, Santiago
 Chile
 Phone: 56-2-7547776